

Wylde Solutions – VG Custom KPI View Web Part

Overview

VG Custom KPI View Web Part – is a Web part that allows you to display key performance indicators using custom images. Out of the box SharePoint KPI Lists don't have capability of customizing the KPI image apart from changing those images for the whole Web server. Wylde Solutions have developed VG Custom KPI View Web Part in order to fill this gap in functionality.

Instructions

0. Prerequisites

- 0.1. MOSS 2007
- 0.2. KPI List(s) created on the Web site
- 0.3. Images that you will use in order to display your KPI data

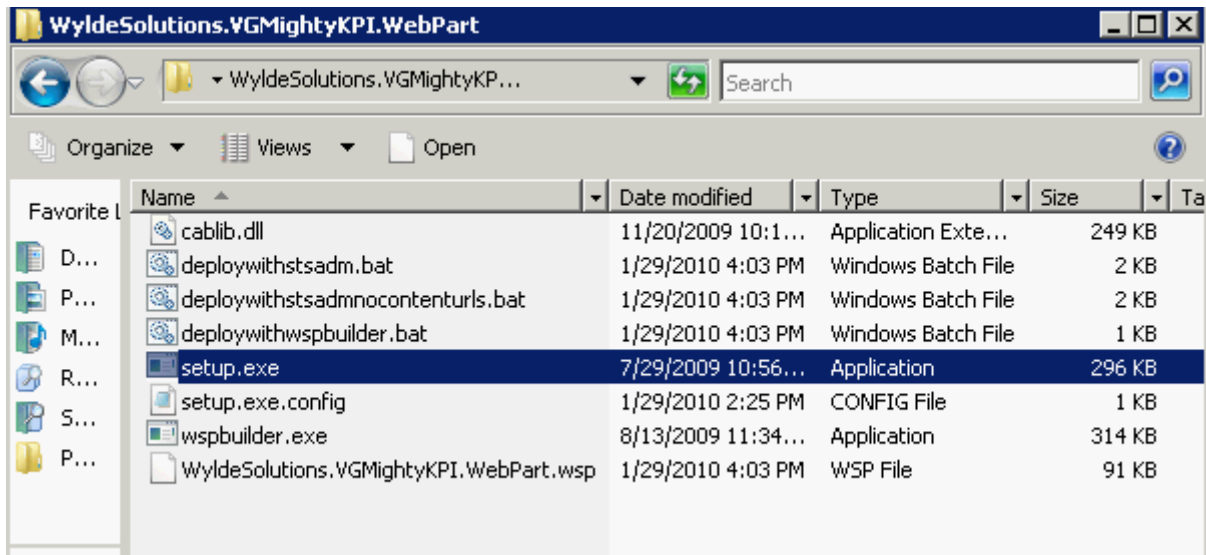
1. Installation

1.1. WyldeSolutions.VGMightyKPI.WebPart.zip contains the folder WyldeSolutions.VGMightyKPI.WebPart where you can find WyldeSolutions.VGMightyKPI.WebPart.wsp file and WSP Builder generated package to install VG Custom KPI View Web Part. For more information about WSP Builder please visit the following Web site:

<http://keutmann.blogspot.com/2009/04/wspbuilder-documentation.html>

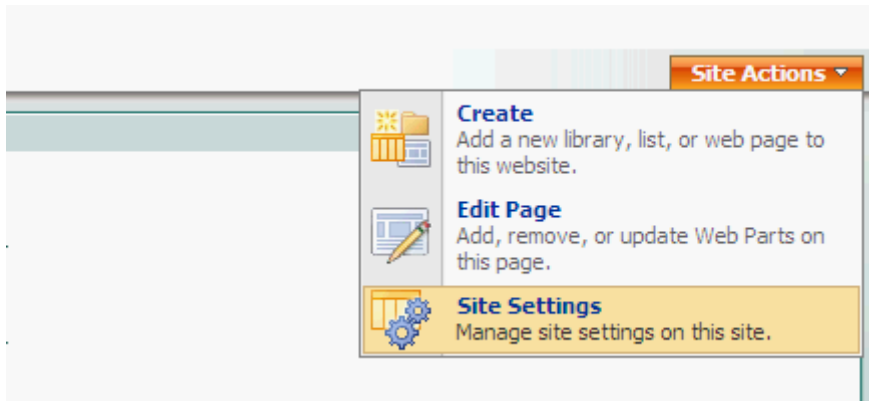
1.2. You can install the solution on your SharePoint Web site using following options:

- 1.2.1. Run setup.exe included in the package and follow the instructions on the screen.
- 1.2.2. Run any of the generated .bat files included in the package
- 1.2.3. Install it using other technique that you know

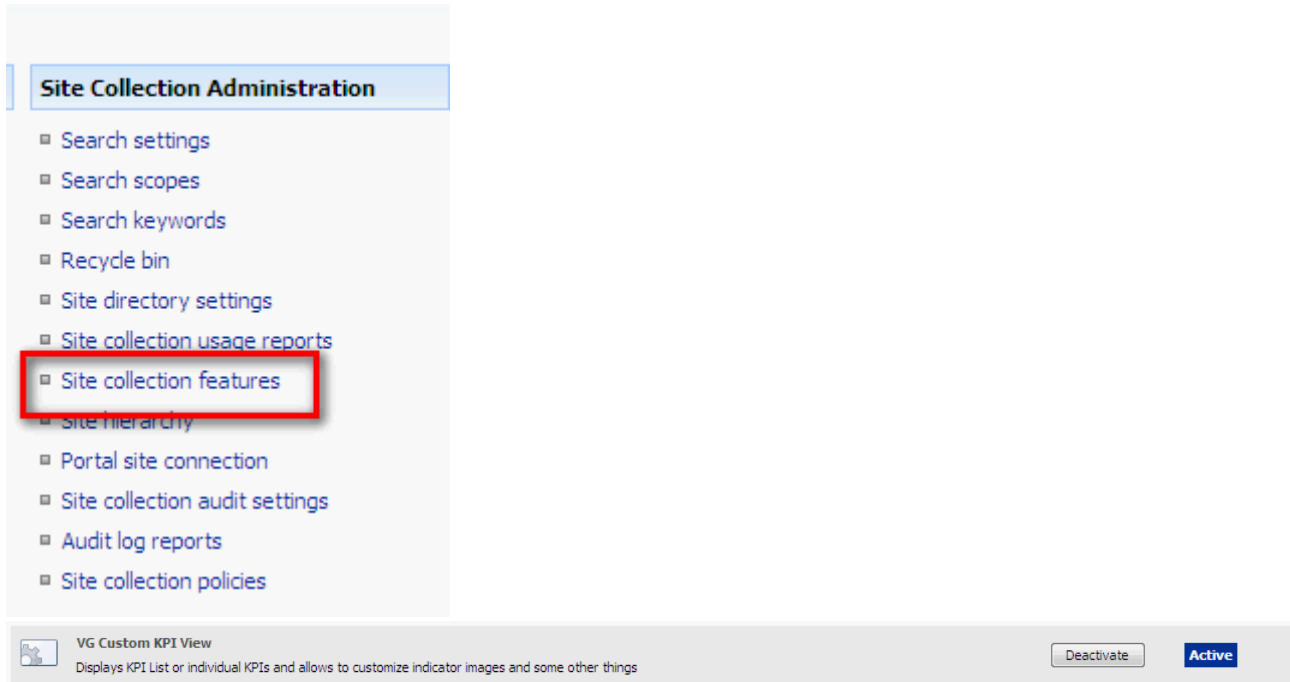


1.3. When you have solution installed you can either go and activate this solution on the selected site collection (if you installed the solution using .bat file) or go straight to the selected site collection in order to activate the feature:

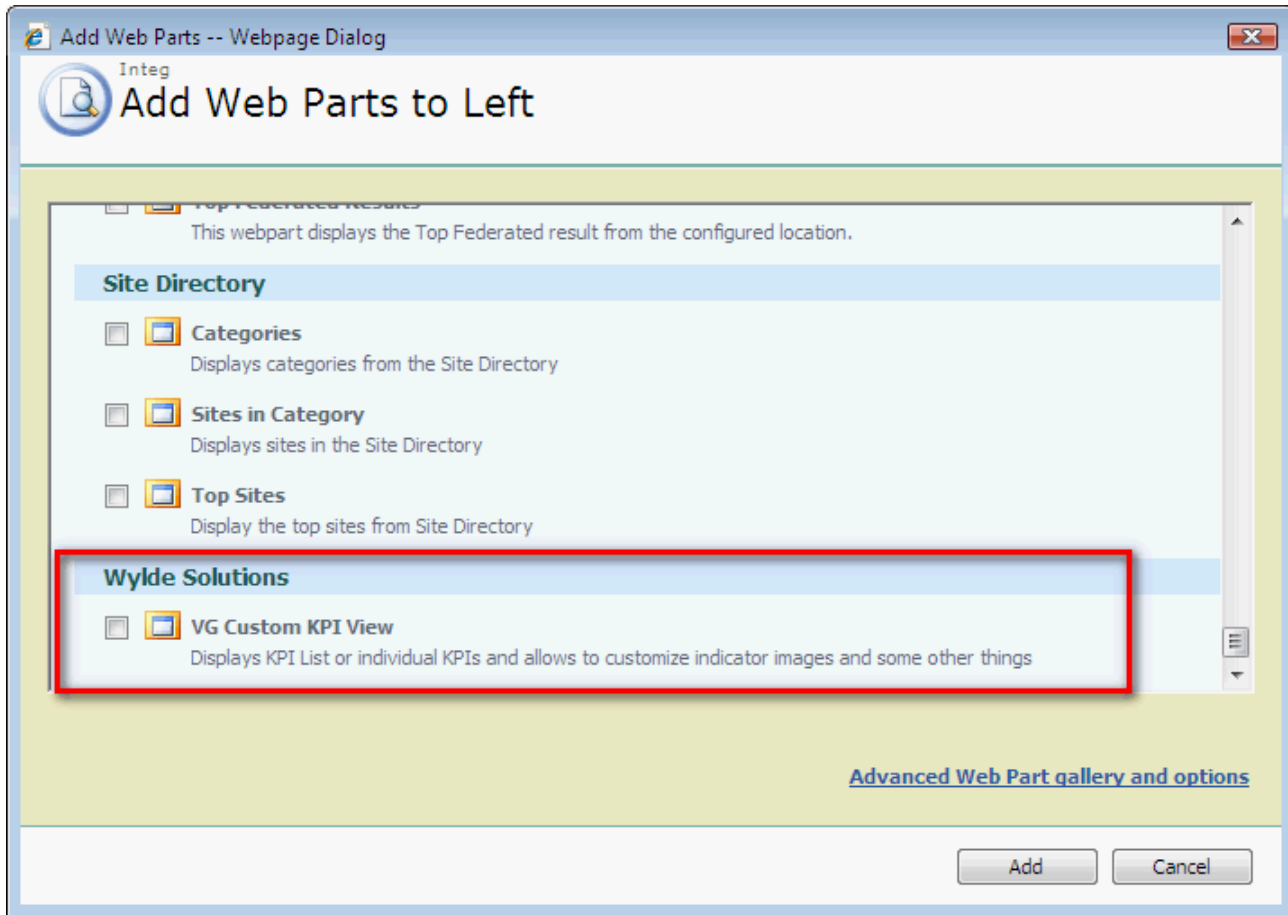
- 1.3.1. Go to Site Settings:



1.3.2. Select “Site collection features” item and activate “VG Custom KPI View” feature:



1.3.3. Add VG Custom KPI View Web part to the page:



2. Web Part Settings

2.1. Check if you have KPI List created. For the demo we will use Mighty KPI List with 4 (four) KPIs created – 3 (three) of them are SharePoint list KPIs and one is Excel Workbook KPI:

Mighty KPI List

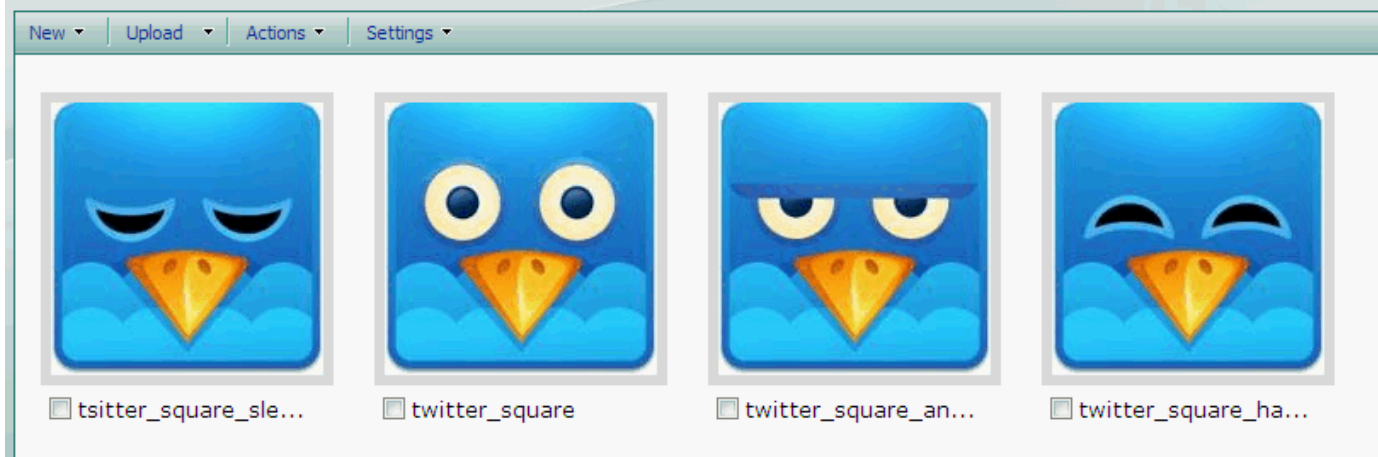
Mighty KPI List

New | Actions | Settings | View: KPI List

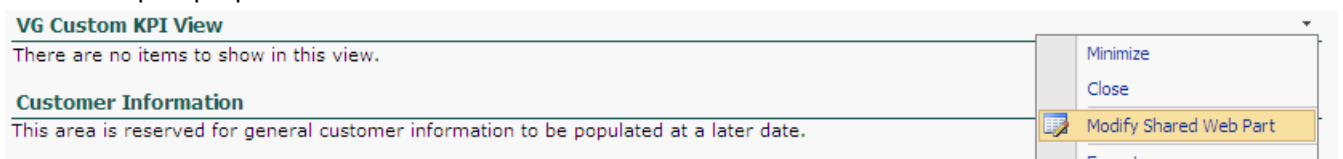
Indicator	Goal	Value	Status
SharePoint 1	100	0	◆
SharePoint 2	70%	0%	◆
SharePoint 3	1,000.00	NaN	◆
Excel Workbook 1	\$1,037.00	\$489.32	◆

2.2. Check if you have images that you will use to display KPI status. We will use [Icons by: FastIcon.com](http://www.fasticon.com):

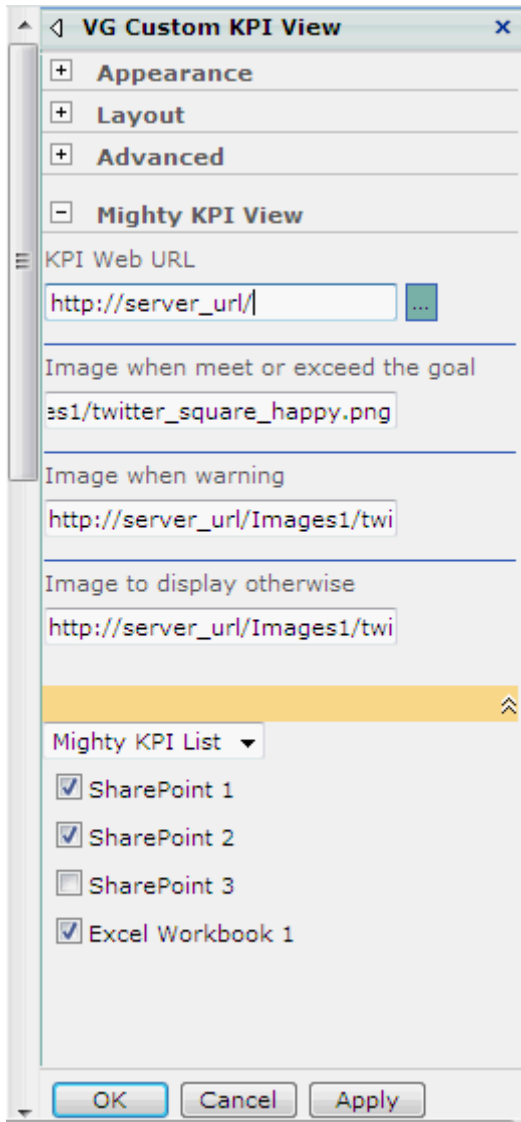
Images






2.3. Go to Web part properties:



2.4. Provide KPI Web site URL, Image URLs and select KPI list that you want to display and KPIs from that list that you want to display. Then press Apply or OK to save changes:



2.5. Here we go. We can now display custom image for the KPI which is calculated by SharePoint:

VG Custom KPI View			
Title	Value	Goal	Status
SharePoint 1	0	100	
SharePoint 2	0	70	
Excel Workbook 1	1000	1037	

3. Enjoy. If you have any enquiries please contact Wylde Solutions – support@wyldesolutions.com